

Title:	How to add device into Hik-Connect account	Version:	v1.0	Date:	1/3/2017
Product:	Cameras, NVRs, DVRs	Page:	1 of 8		

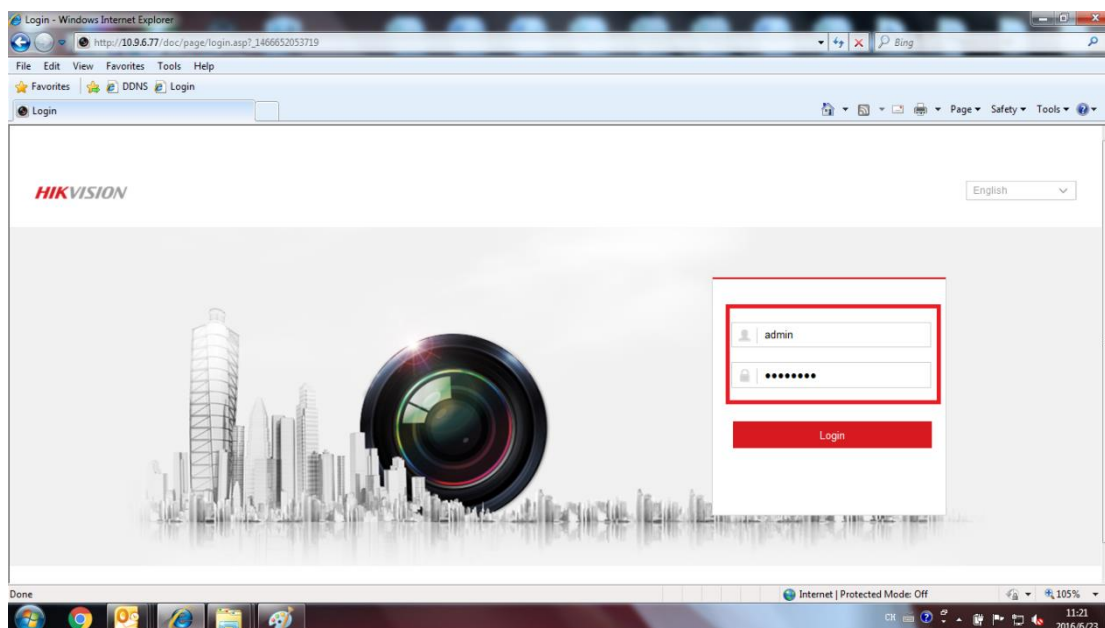


How to Change the Password of the Device?

Method 1: Change the Password on Web

Step 1:

Input IP address of camera in IE browser to login it.

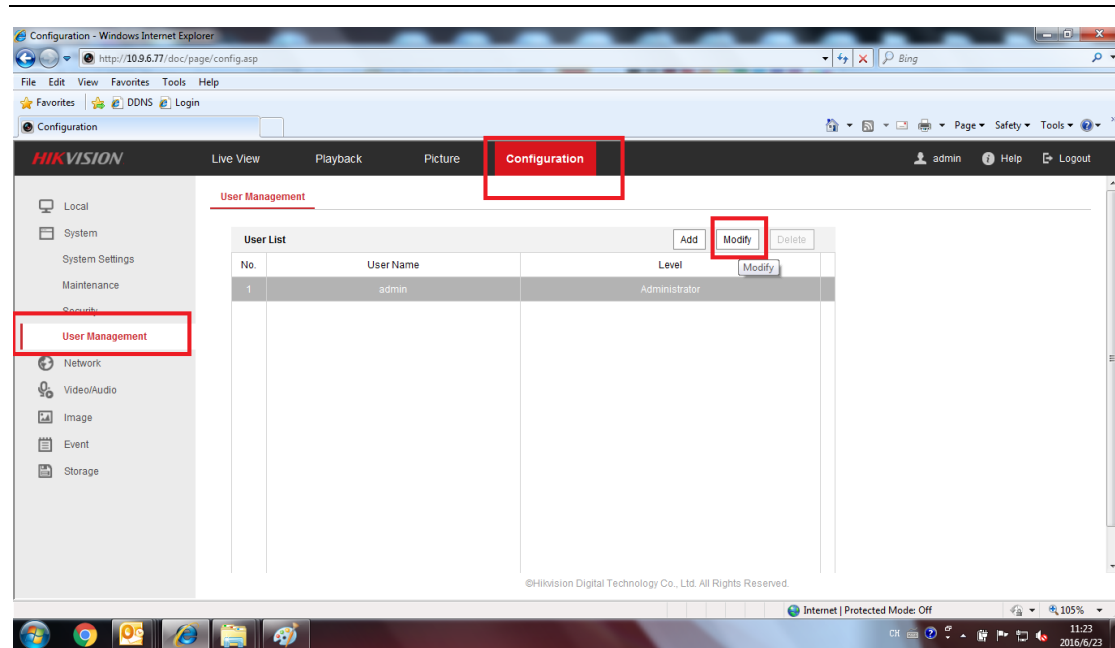


Step 2:

Go to Configuration> User Management, choose the user name admin, then click on the modify button.

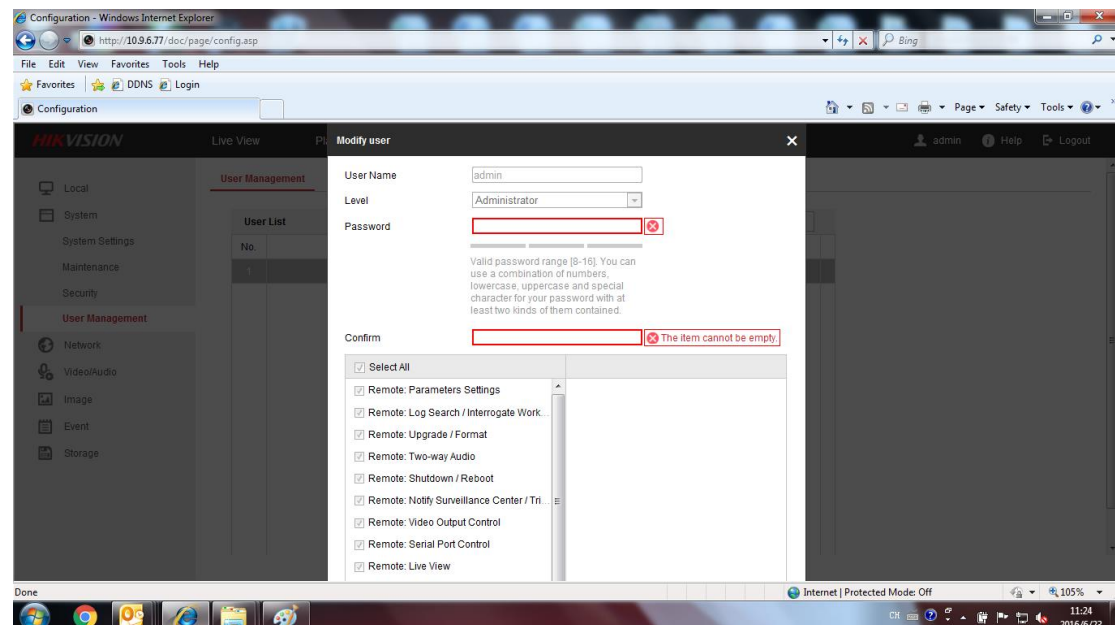
Title:	How to add device into Hik-Connect account	Version:	v1.0	Date:	1/3/2017
Product:	Cameras, NVRs, DVRs	Page:	2 of 8		

HIKVISION



Step 3:

Delete the old password then input the new password of the device in the red box, input it again to confirm it.

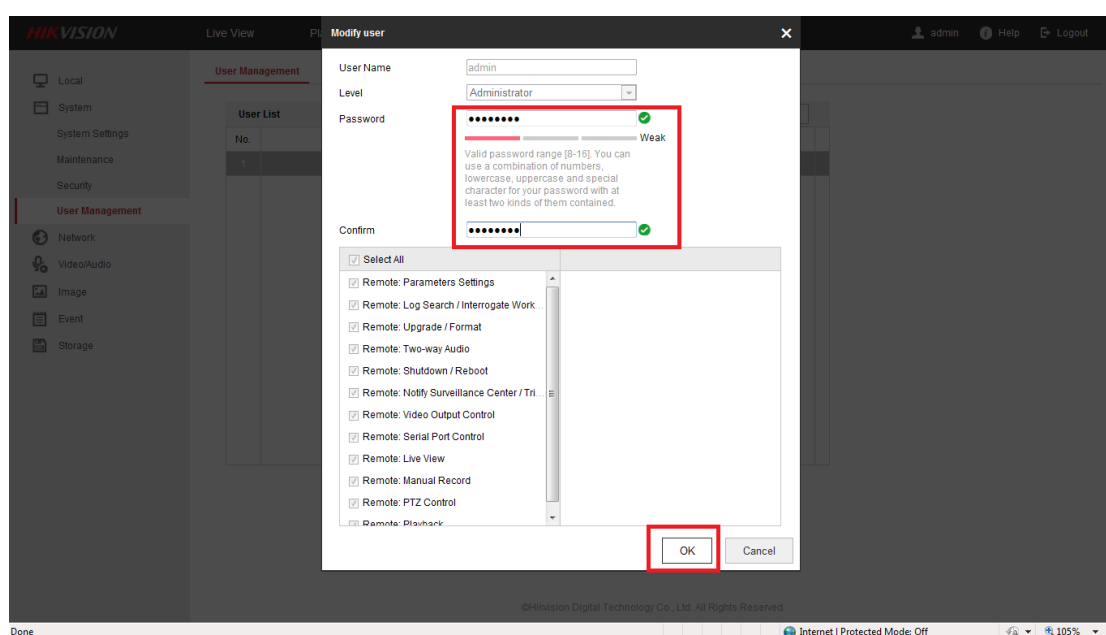


Step 4:

Then click OK. The password is changed successfully.

Title:	How to add device into Hik-Connect account	Version:	v1.0	Date:	1/3/2017
Product:	Cameras, NVRs, DVRs	Page:	3 of 8		

HIKVISION

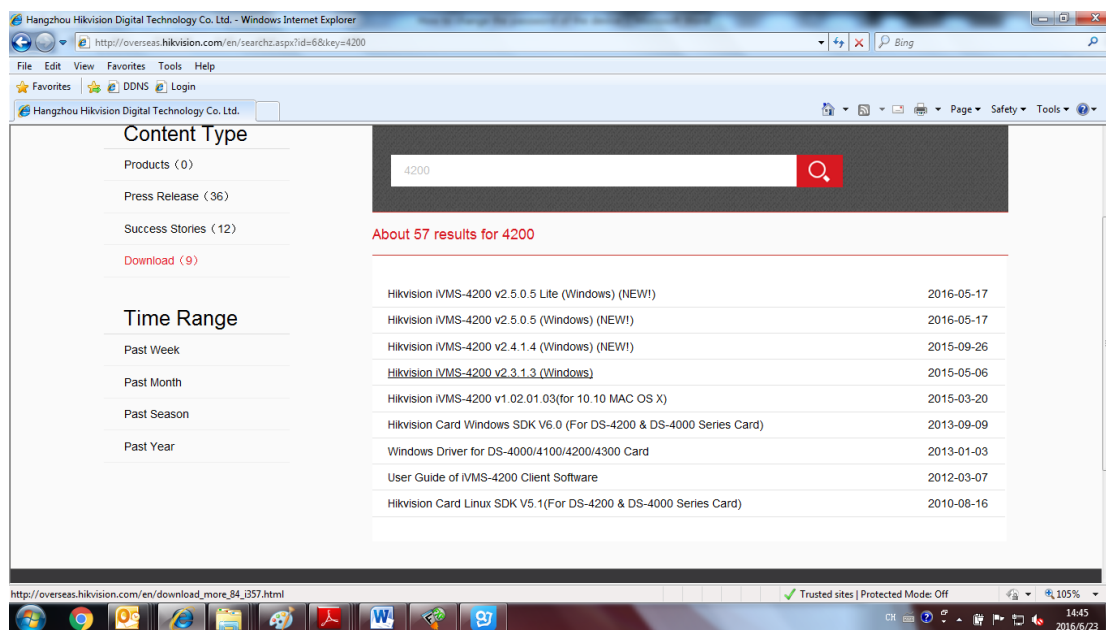


Method 2: Change the Password of the Device via iVMS-4200

Step 1:

Open the following link in the browser to download iVMS-4200

<http://overseas.hikvision.com/en/searchz.aspx?id=6&key=4200>



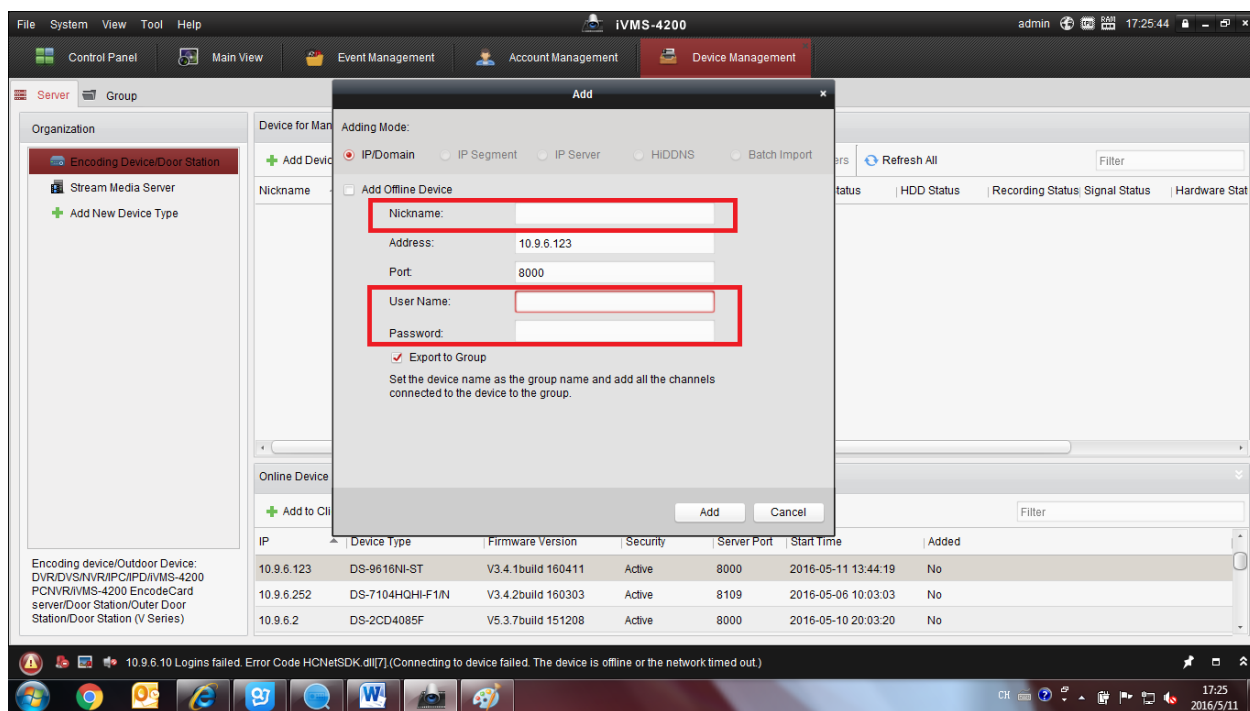
Step 2:

Go to Control panel> Device management>Encoding Device, find and select the device from the

Title:	How to add device into Hik-Connect account	Version:	v1.0	Date:	1/3/2017
Product:	Cameras, NVRs, DVRs	Page:	4 of 8		

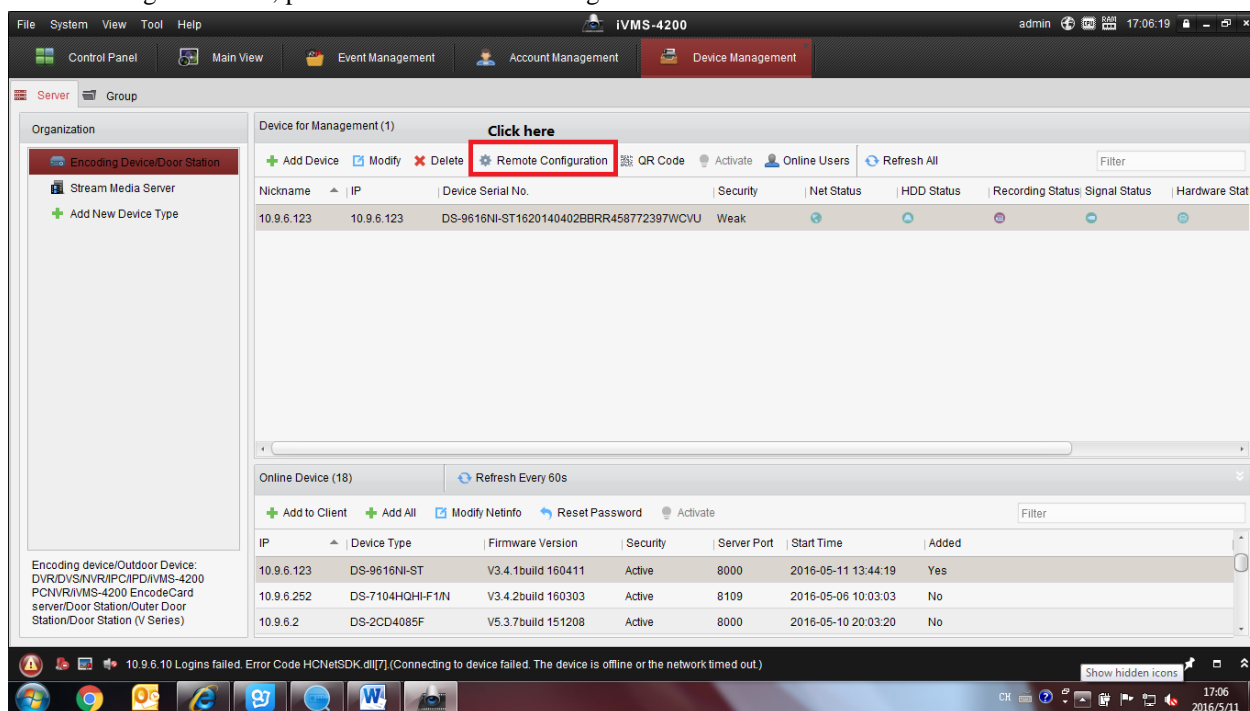
HIKVISION

online device list. Then add the device to the client via input nickname, username and password.



Step 3:

After adding the device, please click on remote configuration.

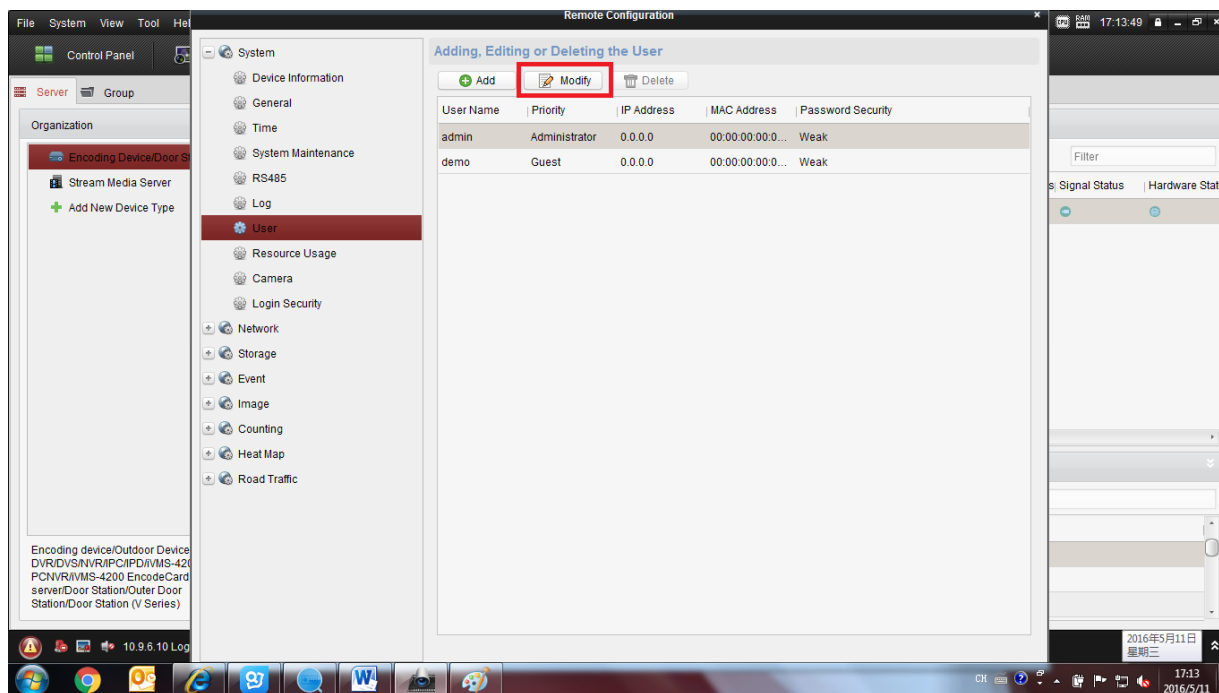


Title:	How to add device into Hik-Connect account	Version:	v1.0	Date:	1/3/2017
Product:	Cameras, NVRs, DVRs	Page:	5 of 8		

HIKVISION

Step 4:

Click **Modify** to change the password of admin.



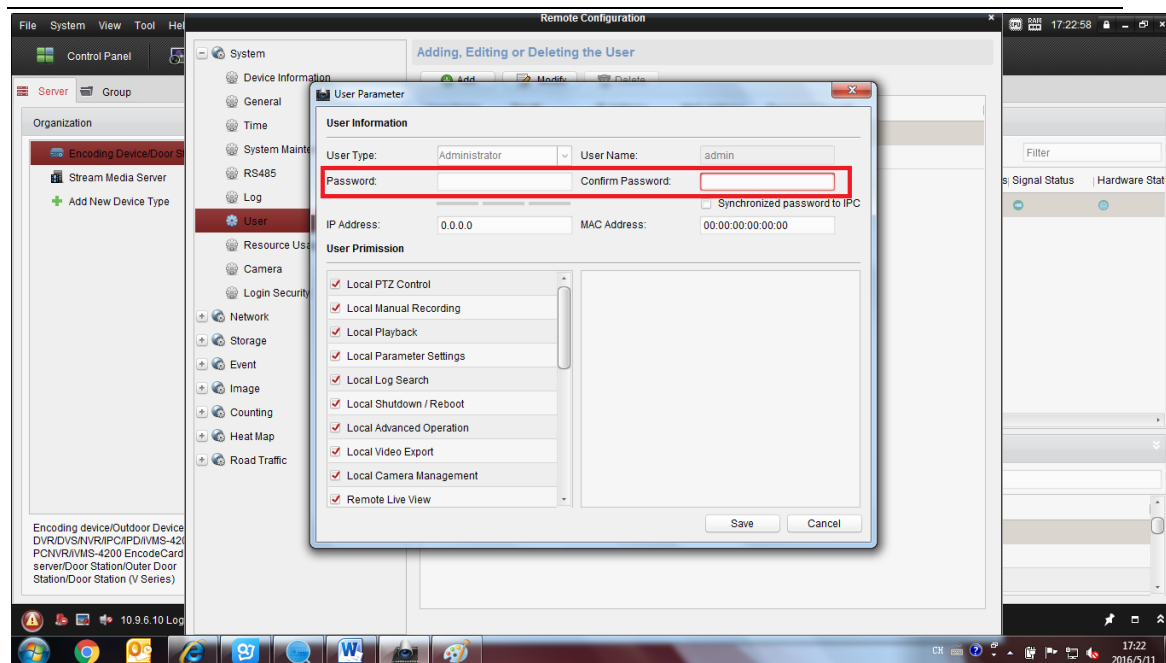
Step 5:

Delete the old password then input the new password of the device and type it again to confirm it.

Click save, the password is changed successfully.

Title:	How to add device into Hik-Connect account	Version:	v1.0	Date:	1/3/2017
Product:	Cameras, NVRs, DVRs	Page:	6 of 8		

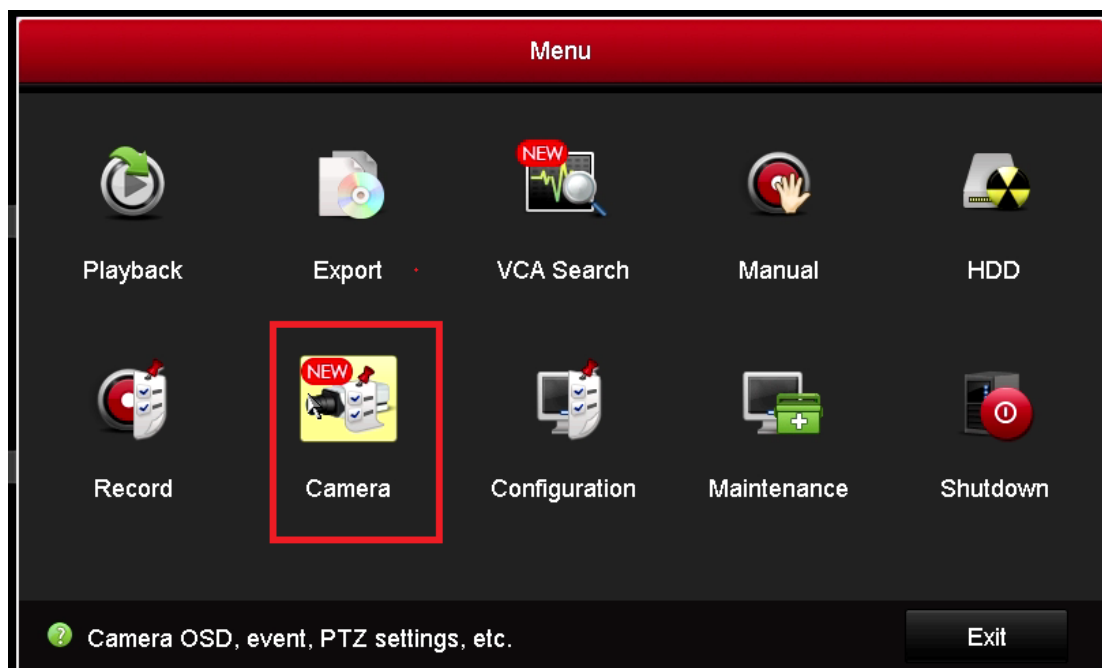
HIKVISION



Method 3: Change the Password of the Device via NVR/DVR Local Menu

Step 1:

Go to Camera;

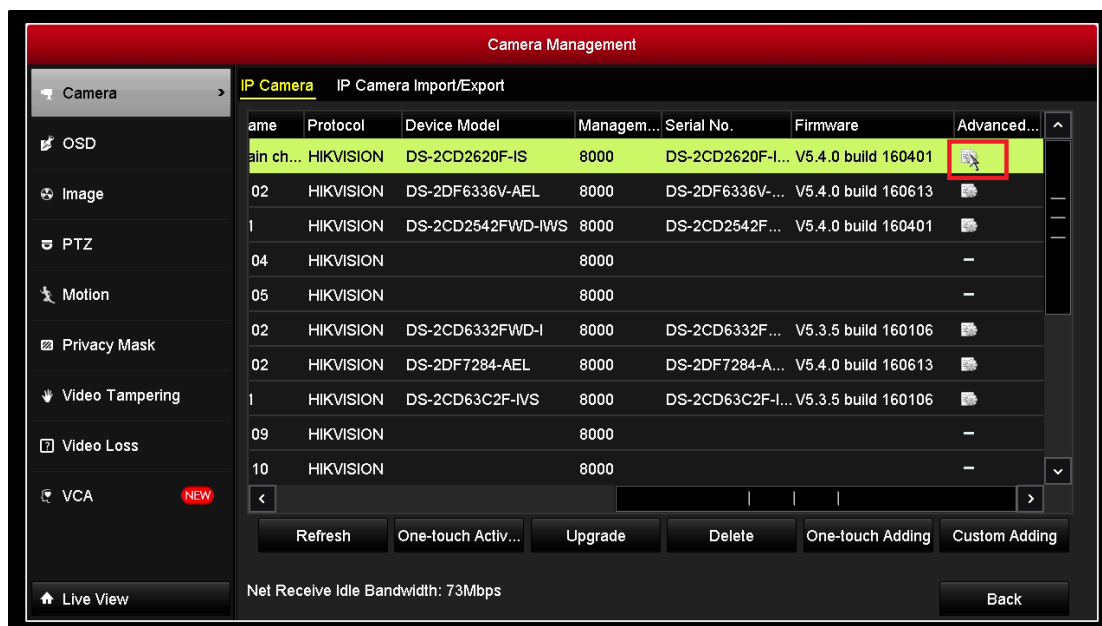


Step 2:

Title:	How to add device into Hik-Connect account	Version:	v1.0	Date:	1/3/2017
Product:	Cameras, NVRs, DVRs	Page:	7 of 8		

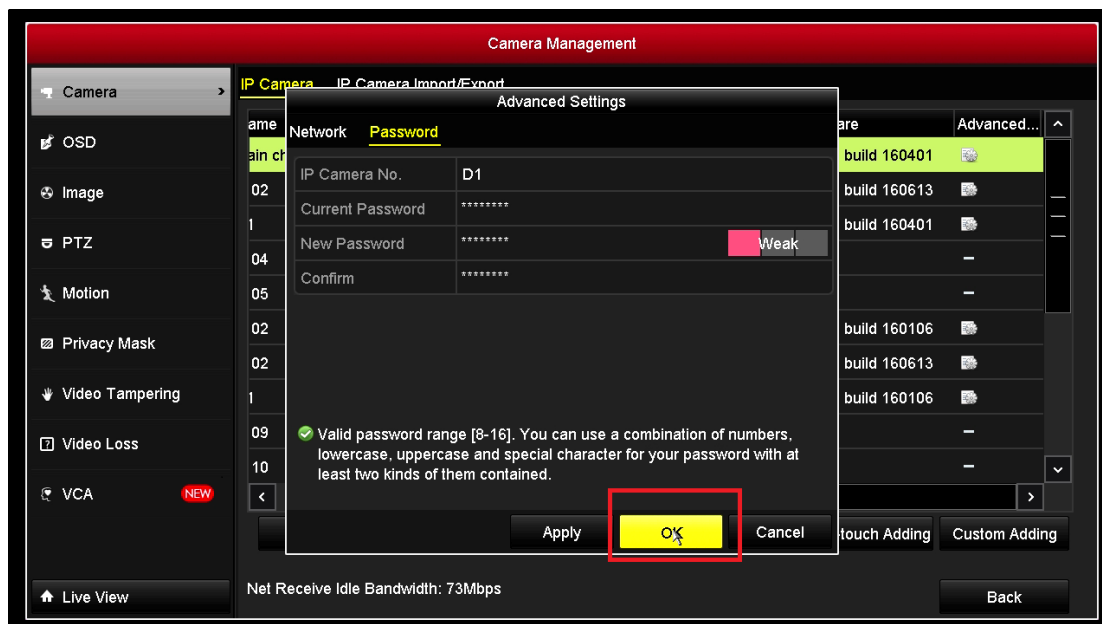
HIKVISION

Choose the camera then click on the icon which represents advanced settings.



Step 3:

Input the current password firstly, then input the new password and type it again to confirm it. Click OK, the password is changed successfully.



Title:	How to add device into Hik-Connect account	Version:	v1.0	Date:	1/3/2017
Product:	Cameras, NVRs, DVRs	Page:	8 of 8		



First Choice for Security Professionals

***HIK*VISION Technical Support**