



SMART TRAFFIC  
SAFE TRANSIT  
INTELLIGENT TRAFFIC SYSTEMS

Distributed by



**Headquarters**  
No.555 Qianmo Road, Binjiang District,  
Hangzhou 310051, China  
T +86-571-8807-5998  
overseasbusiness@hikvision.com

**Hikvision USA**  
T +1-909-895-0400  
sales.usa@hikvision.com  
**Hikvision Italy**  
T +39-0438-6902  
info.it@hikvision.com  
**Hikvision Singapore**  
T +65-6684-4718  
sg@hikvision.com  
**Hikvision Africa**  
Tel: +27 (10) 0351172  
sale.africa@hikvision.com

**Hikvision Europe**  
T +31-23-55-42-770  
info.eu@hikvision.com  
**Hikvision France**  
T +33(0)1-85-330-450  
info.fr@hikvision.com  
**Hikvision Oceania**  
T +61-2-8599-4233  
salesau@hikvision.com  
**Hikvision Turkey**  
T +90-216-521-70-70  
sales.tr@hikvision.com

**Hikvision Middle East**  
T +971-4-8816086  
salesme@hikvision.com  
**Hikvision Spain**  
T +34-91-737-16-55  
info.es@hikvision.com  
**Hikvision Canada**  
T +1-909-895-0400  
sales.usa@hikvision.com  
**Hikvision Kazakhstan**  
T +7-727-9730667  
nikia.panfilov@hikvision.ru

**Hikvision Russia**  
T +7-495-669-67-99  
saleru@hikvision.com  
**Hikvision Poland**  
T +48-22-460-01-50  
poland@hikvision.com  
**Hikvision Korea**  
T +82-31-731-8841  
sales.korea@hikvision.com  
**Hikvision Hong Kong**  
T +852-2151-1761  
info.hk@hikvision.com

**Hikvision India**  
T +91-22-28469900  
sales@pramahikvision.com  
**Hikvision UK**  
T +01628-902140  
sales.uk@hikvision.com  
**Hikvision Brazil**  
T +55 11 3318-0050  
Latam.support@hikvision.com

Follow us on social media to get the latest product and solution information



Hikvision



HikvisionHQ



HikvisionHQ



Hikvision  
Corporate Channel

[www.hikvision.com](http://www.hikvision.com)

SMART TRAFFIC  
SAFE TRANSIT  
INTELLIGENT TRAFFIC SYSTEMS



ITS 2017-1H







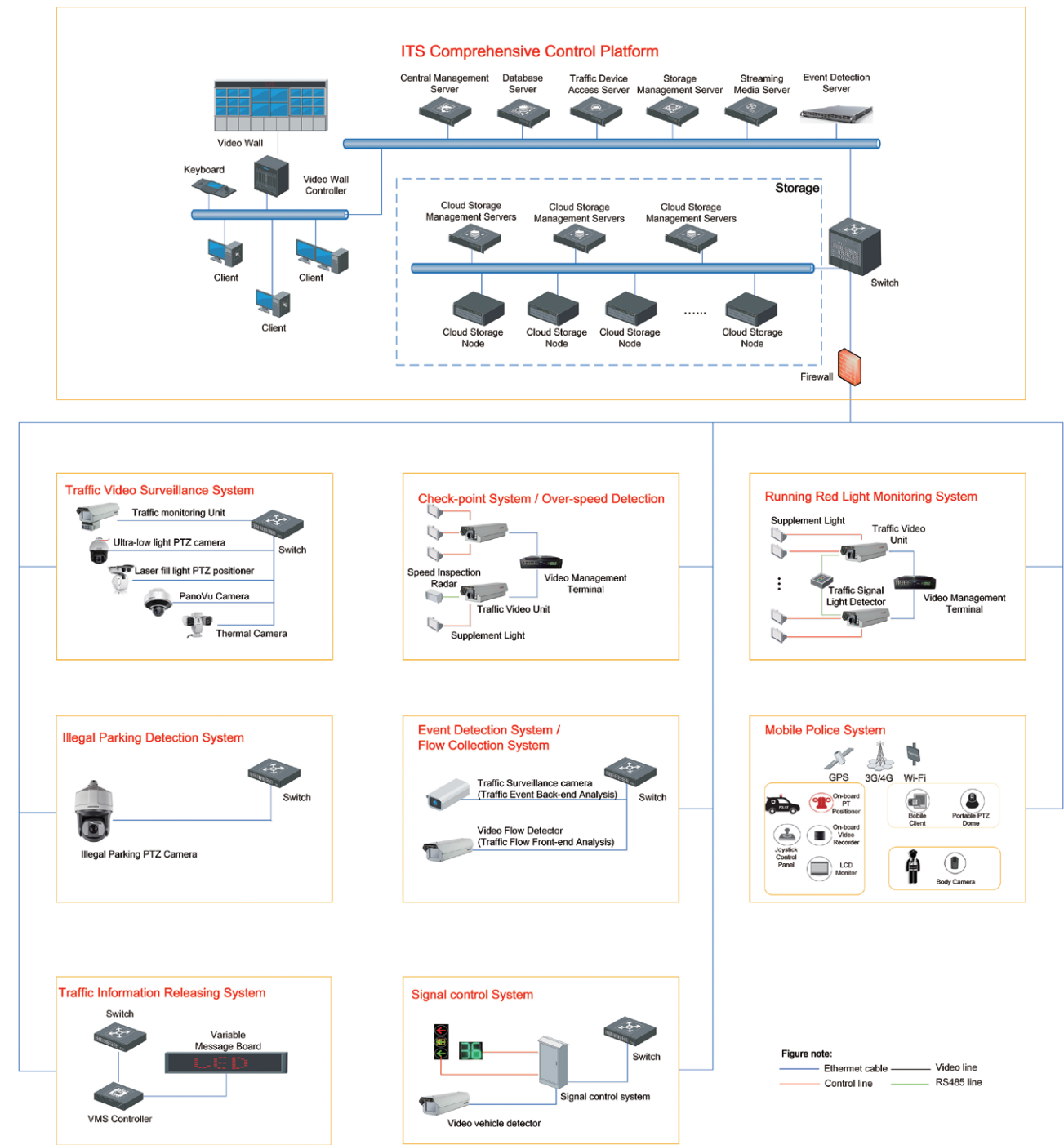
Hikvision is committed to providing complete and innovative solutions in Intelligent Traffic Systems (ITS). The latest solution from Hikvision Smart IP Solutions, the Intelligent Traffic System, includes dedicated, high-performance cameras for event capture, reliable embedded video terminals for event recording, and a centralized video management platform – perfectly unifying all the ITS devices and delivering service-extensible applications.

Hikvision is the security industry's number one video surveillance solution supplier worldwide. Take your transportation surveillance to the next level with a partner you can rely on.



# SOLUTION ARCHITECTURE

From an illegal parking detection system to a mobile police security system, or even integrated into a comprehensive Smart City control platform, Hikvision's Intelligent traffic solution will have you covered. From front to back, you can trust Hikvision products for industry-leading stability, reliability, and performance.



# ITS SUBSYSTEMS

One comprehensive solution can be divided into discrete, manageable subsystems for precise security. Hikvision's ITS provides everything necessary for the smartest and most effective surveillance.



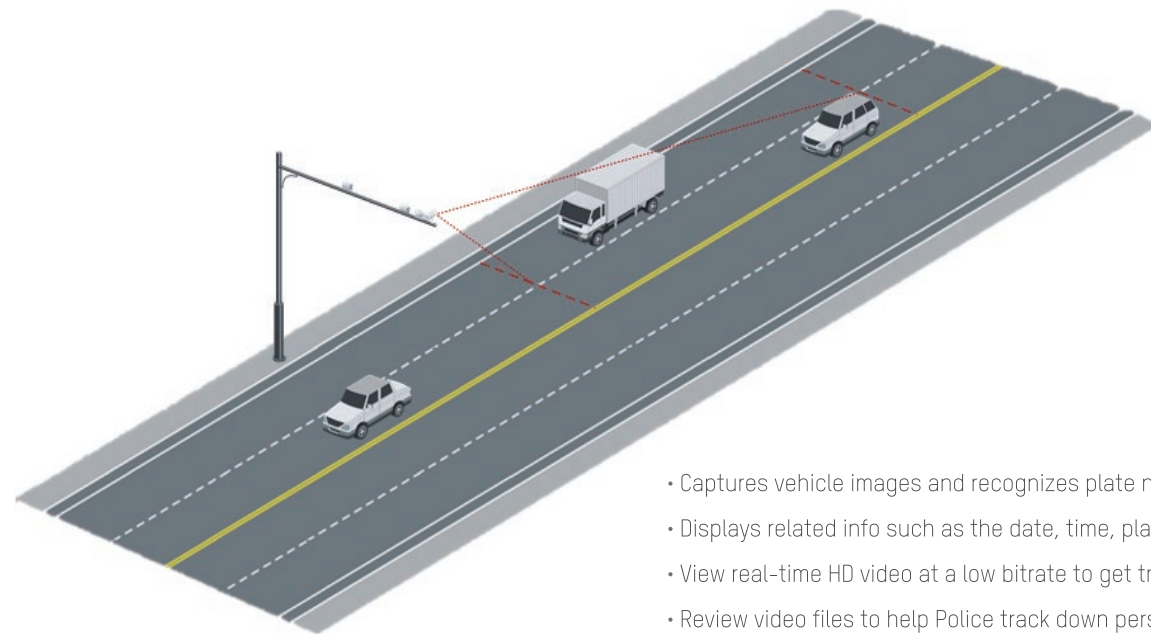


# CHECKPOINTS

In the intelligent traffic solution, checkpoints provide key data on traffic flow and violations. These flexible tools create an intelligent network that weaves the whole roadmap together for maximum insight and administration of motorways.

## Vehicle Capture

Whenever a vehicle passes through an ITS-equipped checkpoint, the system captures a photo and automatically links significant data – including license number and speed value.



- Captures vehicle images and recognizes plate numbers.
- Displays related info such as the date, time, plate number, etc.
- View real-time HD video at a low bitrate to get traffic information.
- Review video files to help Police track down persons of interest.



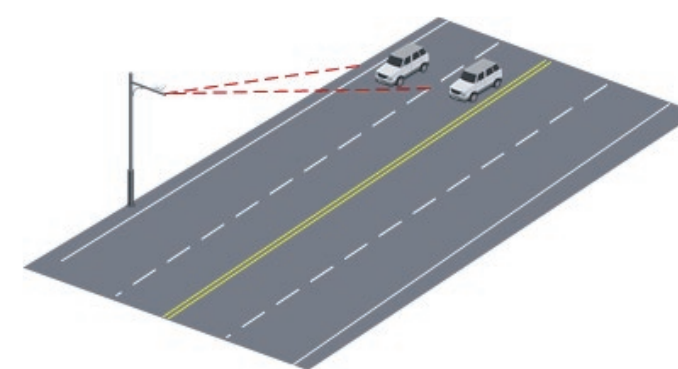
High resolution CCD Traffic cameras can accurately capture speeding vehicles.



Various LED or strobe lights ensure clear images in nighttime monitoring.

## Speed Measurement

Speeds can be captured by radar or by segmenting road sections. High-accuracy radar featuring continuous capture reliably records speeding vehicles, while a double-checkpoint segmentation system provides performance superior to a single-checkpoint setup.



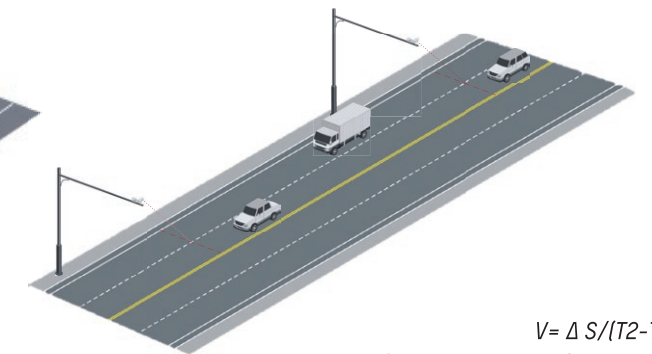
By Radar

### High Accuracy Radar:

Narrow wave, convergent, covers single lane only, no ambiguity

### Continuous Capture:

High frequency, supplemental light recharges fast, vehicle cannot escape view



$V = \Delta S / (T2 - T1)$   
Calculated by terminal servers

By Segment

Operating two checkpoints prevents the failures of a single-point capturing a speeding driver



- Vehicle information recording
- Forensic snapshot
- Real-time analysis for vehicle violations
- Active alarm for vehicle control
- Front-end backup storage
- Transmission resuming
- Radar captures speeds with related vehicle video
- Detects speeding vehicles at checkpoints by radar
- Detects speeding vehicles via side-mounted radar

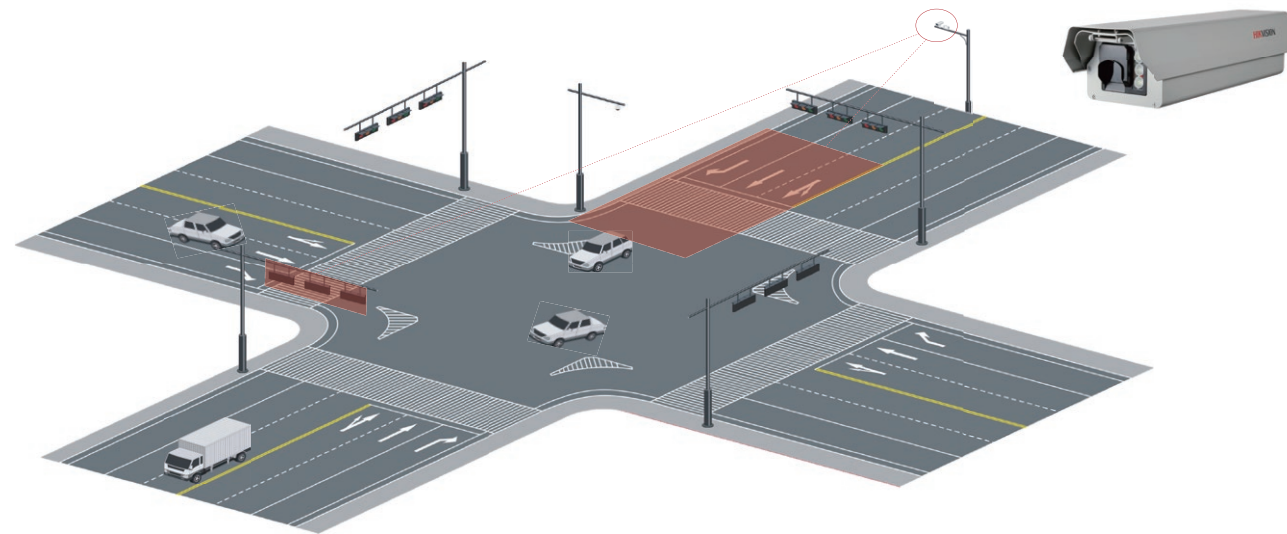
The following functions require adapting region-specific standards:

- Traffic flow / count
- Auto filter out captures when two or more vehicles are detected
- Speeding vehicle detect by segment
- Structured information extraction from vehicle number plate



# INTERSECTION VIOLATIONS

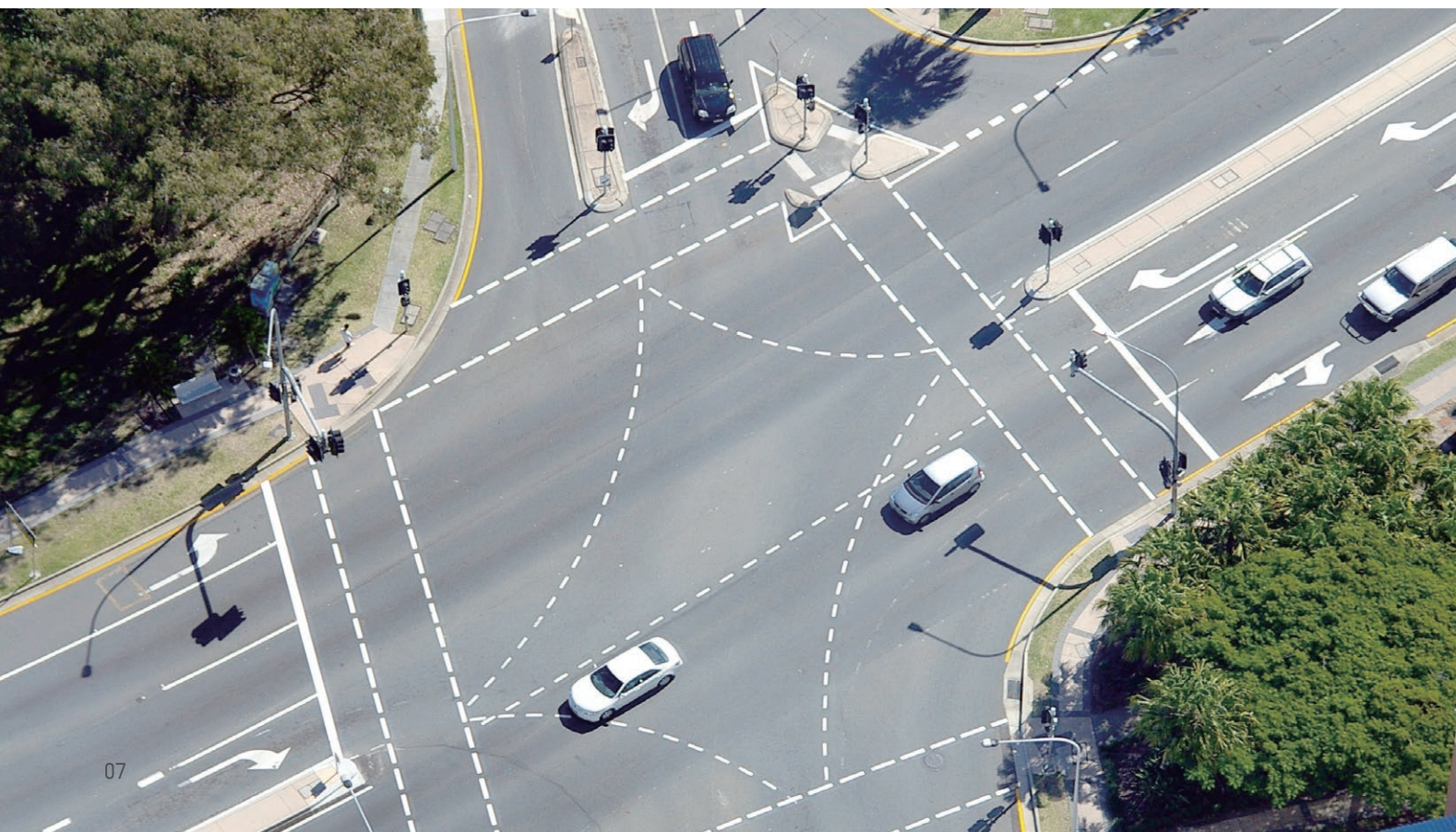
Intersections, where collisions occur, are the most critical applications for intelligent traffic management. Find the most effective tools here in our complete solution package.



- Vehicle Information Record
- Red-light violation detection and capture
- Other traffic violations include wrong-way driving, direction deviations, prohibited lane changes, crossing lines, etc.
- Traffic flow and counting
- Real-time analysis for vehicle violations
- Active alarms for vehicle control
- Front-end backup storage
- Automatic network transmission resuming

The following functions require adapting region-specific standards:

- Structured information extraction from vehicle number plate



## Running Red Light



### Running red light violation detection:

A traffic video unit captures three images of a vehicle crossing an intersection against a red light and produces data about when, where, vehicle plate number, and a red light violation. The three images and a close-up are combined into a single picture.

## Reverse Driving



### Reverse driving detection:

A traffic video unit captures three images of a vehicle which has driven in the wrong direction and produces data about when and where it occurred, vehicle plate number, and a wrong-way driving violation. The three images and a close-up are combined into a single picture.

## Driving Against Guidance



### Driving against directional marking detection:

A traffic video unit captures three images of a vehicle which has driven in a direction against the direction markers and produces data about when and where it occurred, vehicle plate number, and a directional deviation. The three images and a close-up are combined into a single picture.

## Illegal Lane Change

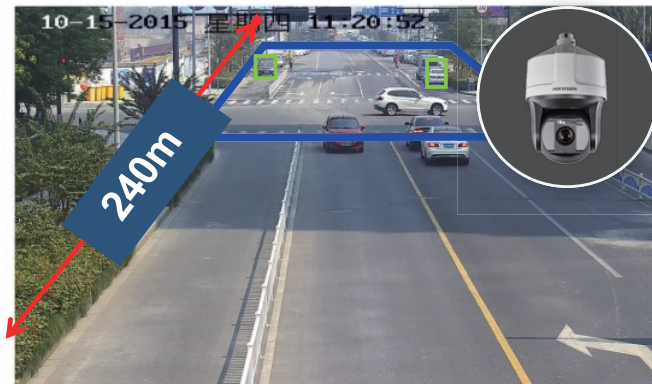


### Illegal lane change detection:

A traffic video unit captures three images of a vehicle which has driven in a direction against the direction markers and produces data about when and where it occurred, vehicle plate number, and a line-crossing violation. The three images and a close-up are combined into a single picture.



## ILLEGAL PARKING DETECTION



- Illegal parking detection and capture
- Multiple target processing
- Multi scene quick polling
- transmission resuming
- Long detection distance with 36x optical zoom

The following functions require adapting region-specific standards:

- Structured information extraction from vehicle number plate

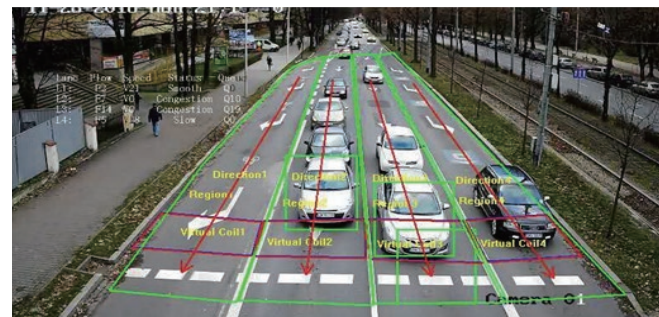
### Illegal Parking Detection:

One traffic speed dome captures three images of a vehicle where parking is not allowed, or parking overtime, and produces data about when and where it occurred, vehicle plate number, and a parking violation. The three images and a close-up are combined into a single picture.



## TRAFFIC FLOW COLLECTION

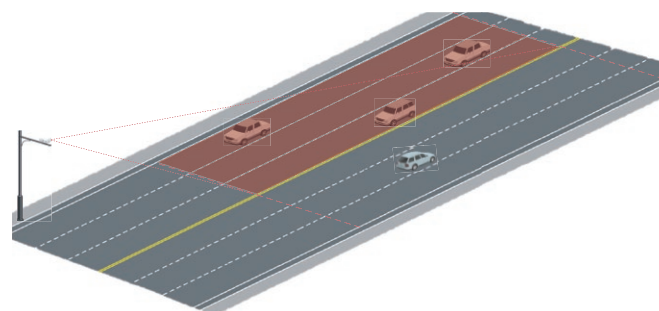
The Traffic Control system reports traffic flow, processes original data, and displays traffic status to the public – ultimately relieving traffic congestions.



- Vehicle Counting

The following functions require adapting region-specific standards:

- Average speed of vehicle
- Length of queue
- Type of vehicle (2 types in baseline)
- Place and time
- Distance between two adjacent vehicles
- Interval between two adjacent vehicles
- Level of traffic jam(3 types) -- Clear, Slowed, or Jammed
- Real-time traffic data output



## MOBILE ENFORCEMENT

When you need a system that moves, Hikvision moves with you. The mobile subsystem has been field-tested and proven in critical, on-the-ground applications.

### Police Vehicle Mobile Monitoring

Extreme weather can cause major traffic disasters. Peaceful public demonstrations can turn into unlawful events. Earth-quakes, floods, and lightning storms can interrupt power and water supplies. The unpredictability of these incidents requires civic authority personnel to be mobile, nimble, and always ready to go. And the equipment has to be ready, too. Turn enforcement vehicles into temporary mobile monitoring stations and move your gear to where it's most needed with our on-board systems.



### An All-in-One Surveillance System

Turn enforcement vehicles into temporary mobile monitoring stations.

All-in-One Surveillance Station    Instant HD-TVI Video    Robust On-Board Recording



On-Board PTZ Positioner



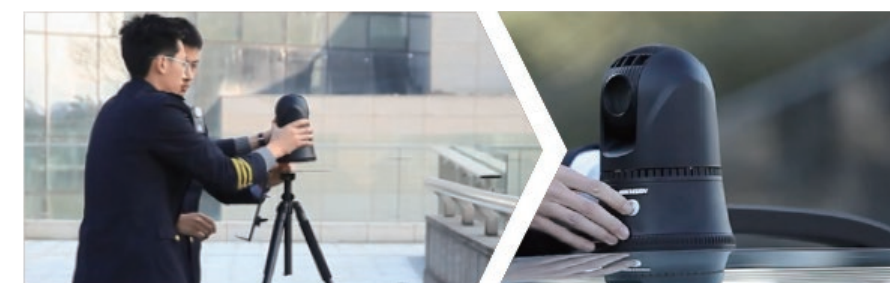
On-Board Video Recorder



LED Monitor Joystick Control Panel

### Temporary Monitoring

When permanent surveillance installations are not possible, mobile enforcement solutions have to fill in the gap. On the roads, at the public squares, in rural areas – wherever you need surveillance equipment to go, Hikvision's products will go.



Magnetic or Tripod Mount

Built-in Battery with Extended Life

Easy Wi-Fi Connection for Operation



1080p Network Portable IR Speed Dome  
DS-MH6171I

\* ANPR function requires customization for local applicability.

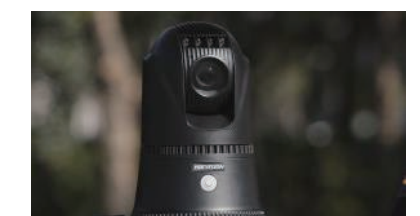


Mobile Speed Detection System  
IDS-TDI300-A

\*Coming soon in Q3 of 2017



Easy Wi-Fi Connection





## Wearable Monitoring

Rugged, wearable body cameras record activities of citizens and civil authorities as they happen. Their advanced technology, portability, and ease-of-use make them extremely effective companions for law enforcement. Equipped with GPS locators, you'll know where the emergency exists as it happens. These cameras build forensic evidence with safely stored data, and play back video footage clearly and accurately. Protect people and peacekeepers with wearable video recording devices.



Wearable devices capture incidents promptly for forensic evidence or establish communication with security centers for post-event handling.



After receiving an alarm, security centers can auto-position an incident location and dispatch the nearest team for support.



Police personnel can take immediate action at the incident location. The on-board monitoring system ensures accountability regarding enforcement and abuse.



Body Camera  
• DS-MH2111/326(Wi-Fi)  
• DS-MH2111/326/GLF (4G/Wi-Fi)



Body Camera  
• DS-MH2111/326/64G (Wi-Fi)  
\*Device continues operates when Changing battery



Body Camera Dock Station  
• DS-MH4172I

PORTABILITY

EXTENSIBILITY

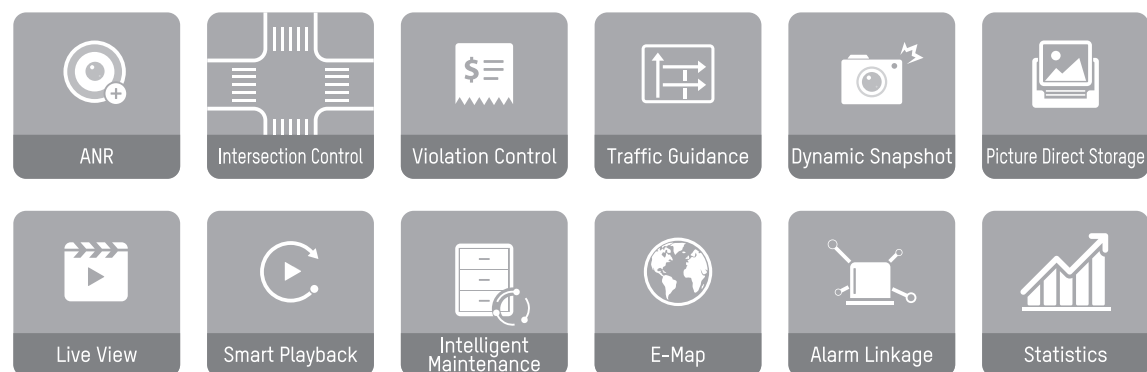
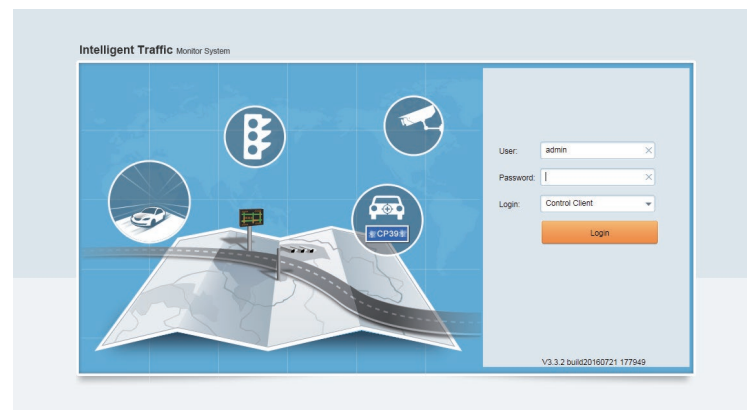
OPERABILITY

# SOFTWARE PLATFORM

Hikvision's iVMS systems are known throughout the security industry for their power, compatibility, and reliability. This bespoke video management system is no different. Intuitive and effective management of a complex web of traffic in any locale is now at your fingertips.

## IVMS-8600

IVMS-8600 ITS platform was designed specifically for the development of an integrated image-processing application platform for the traffic industry. The software integrates vehicle checkpoints, violation detections, video surveillance, illegal parking detection, intersection control, data integration, and more. Gain mastery of the intelligent traffic image application with the iVMS-8600.



## Vehicle Monitoring & Search

The iVMS-8600 Platform monitors, reports, and searches vehicle information recorded at checkpoint subsystems, intersection violation subsystems, and Illegal parking subsystems. This information includes images, plate numbers, time, location, speed, and violation type.

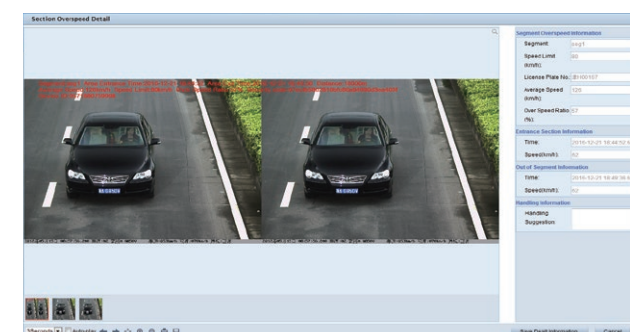
License Plate No.	Intersection	Vehicle Lane	Direction	Time	Status
1204950	Place damo	Vehicle Lane1	From Northwest to South	2017-02-17 14:35:36.375	0
4208233	Place damo	Vehicle Lane1	From Northwest to South	2017-02-17 14:35:34.439	0
4406155	Place damo	Vehicle Lane1	From Northwest to South	2017-02-17 14:35:34.261	0
7120914	Place damo	Vehicle Lane2	From Northwest to South	2017-02-17 14:35:31.017	0
3889	Orients	Vehicle Lane2	From Northwest to South	2017-02-17 14:35:31.074	0
8633028	Orients	Vehicle Lane2	From Northwest to South	2017-02-17 14:35:30.726	0
4302908	Orients	Vehicle Lane2	From Northwest to South	2017-02-17 14:35:30.101	0
2864851	Orients	Vehicle Lane2	From Northwest to South	2017-02-17 14:35:21.358	0
3243233	Orients	Vehicle Lane2	From Northwest to South	2017-02-17 14:35:21.544	0
1057917	Place damo	Vehicle Lane1	From Northwest to South	2017-02-17 14:35:07.919	0
2902400	Place damo	Vehicle Lane2	From Northwest to South	2017-02-17 14:35:07.131	0
3461	Place damo	Vehicle Lane2	From Northwest to South	2017-02-17 14:35:05.232	0



## Violation Search

Hikvision's ITS VMS platform records and reports violation types, including illegal parking, running red light, reverse driving, illegal lane changes, driving across solid lines, speeding, and more.

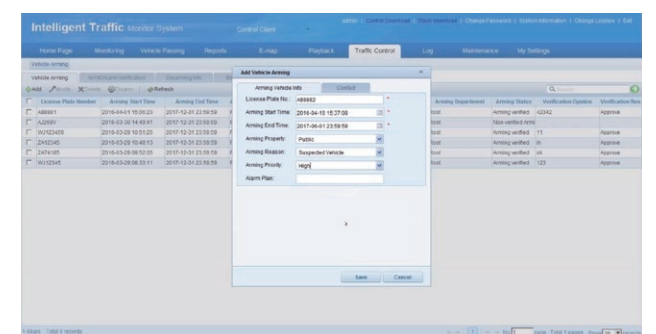
License Plate No.	Segment	Alarm Time	Average Speed	Speed Limit	Status
CT143	Place damo	2017-02-17 06:30:00.000	35	20	95
8137	Place damo	2017-02-17 06:30:00.000	35	20	75
102204	Place damo	2017-02-17 06:30:00.000	43	20	115
0233	Place damo	2017-02-17 06:30:00.000	34	20	70
6958912	Place damo	2017-02-17 06:30:00.000	25	20	25
4813258	Place damo	2017-02-17 06:30:00.000	26	20	30
4272000	Place damo	2017-02-17 06:30:00.000	30	20	50
3010287	Place damo	2017-02-17 06:30:00.000	31	20	55
4902020	Place damo	2017-02-17 06:30:00.000	23	20	15
170204	Place damo	2017-02-17 06:30:00.000	33	20	65
240201	Place damo	2017-02-17 06:30:00.000	30	20	50
2513426	Place damo	2017-02-17 06:30:00.000	43	20	115



## Traffic Control

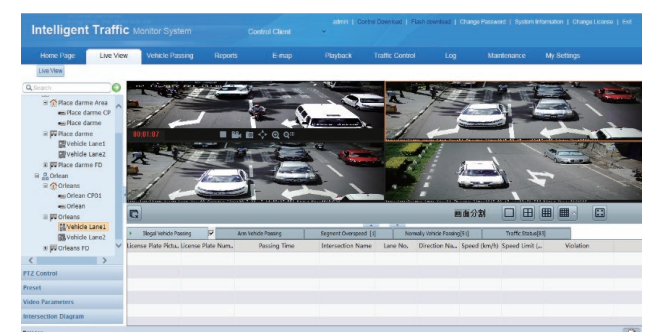
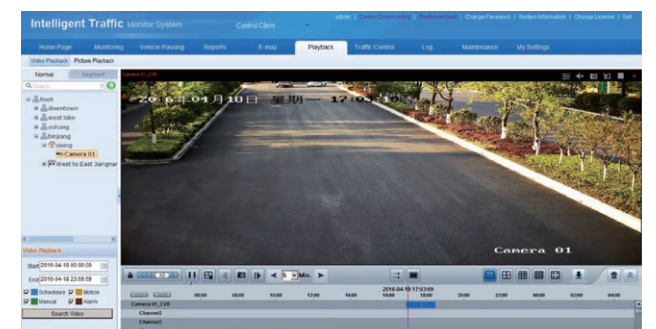
The traffic control feature provides an alarm function when identifying vehicles by plate number. When the vehicle appears, the system will immediately notify traffic police.

License Plate No.	Intersection	Vehicle Lane	Direction	Time	Status
1204950	Place damo	Vehicle Lane1	From Northwest to South	2017-02-17 14:35:36.375	0
4208233	Place damo	Vehicle Lane1	From Northwest to South	2017-02-17 14:35:34.439	0
4406155	Place damo	Vehicle Lane1	From Northwest to South	2017-02-17 14:35:34.261	0
7120914	Place damo	Vehicle Lane2	From Northwest to South	2017-02-17 14:35:31.017	0
3889	Orients	Vehicle Lane2	From Northwest to South	2017-02-17 14:35:31.074	0
8633028	Orients	Vehicle Lane2	From Northwest to South	2017-02-17 14:35:30.726	0
4302908	Orients	Vehicle Lane2	From Northwest to South	2017-02-17 14:35:30.101	0
2864851	Orients	Vehicle Lane2	From Northwest to South	2017-02-17 14:35:21.358	0
3243233	Orients	Vehicle Lane2	From Northwest to South	2017-02-17 14:35:21.544	0
1057917	Place damo	Vehicle Lane1	From Northwest to South	2017-02-17 14:35:07.919	0
2902400	Place damo	Vehicle Lane2	From Northwest to South	2017-02-17 14:35:07.131	0
3461	Place damo	Vehicle Lane2	From Northwest to South	2017-02-17 14:35:05.232	0



## Video Surveillance

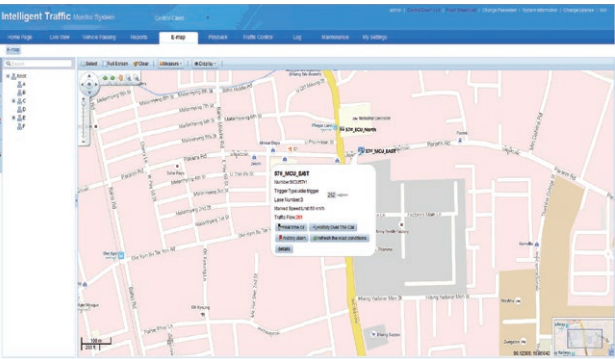
This system not only reports traffic status on roads and at intersections, but can also give the status of any vehicle as it passes every camera in the city. Users can easily search and play back imaged and video.





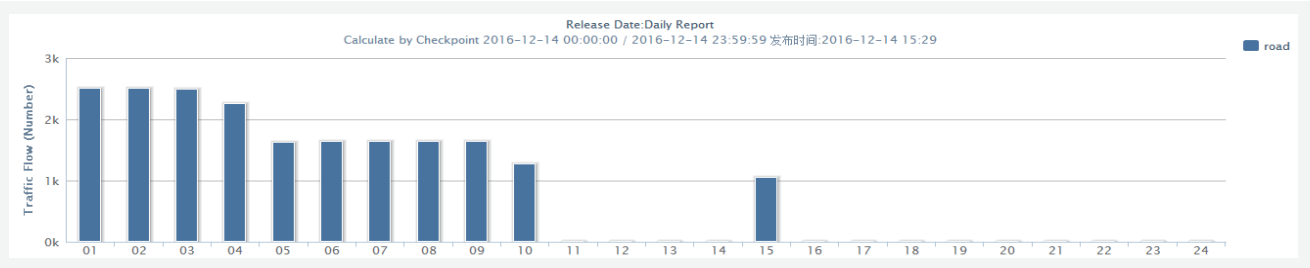
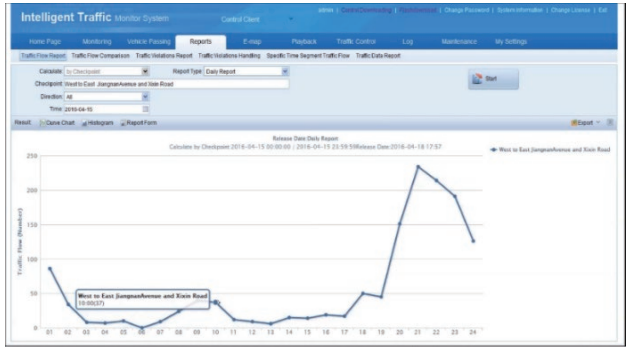
E-Map

This platform easily displays surveillance points and locations at which violation detection subsystems, Illegal parking detection subsystems, and checkpoints are installed. Vehicles can be tracked as they pass each surveillance point.



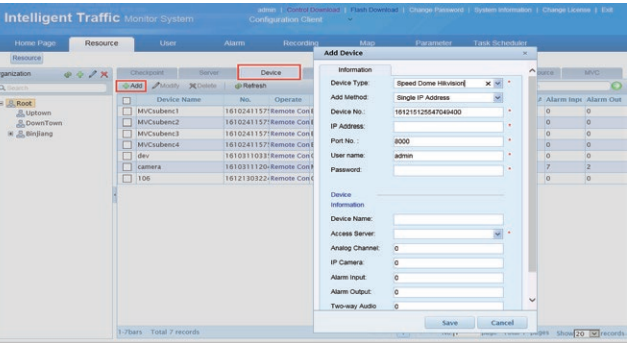
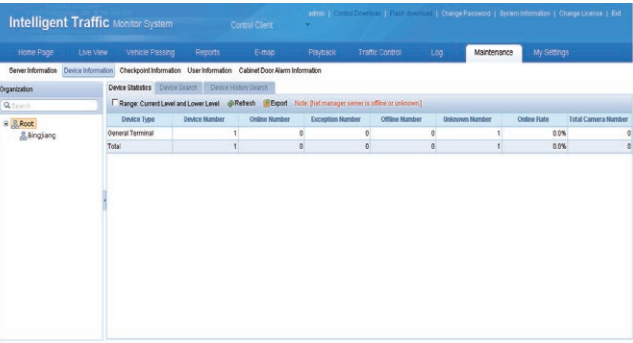
Statistical Analysis Report

Reports are generated from data collected at checkpoint, violation detection, Illegal parking, and ANPR traffic flow collection systems. Reports can be scheduled daily, weekly, monthly, quarterly, and annually, and can be sent by email to key recipients. Reports can also be printed with added report headers and automatic pagination.



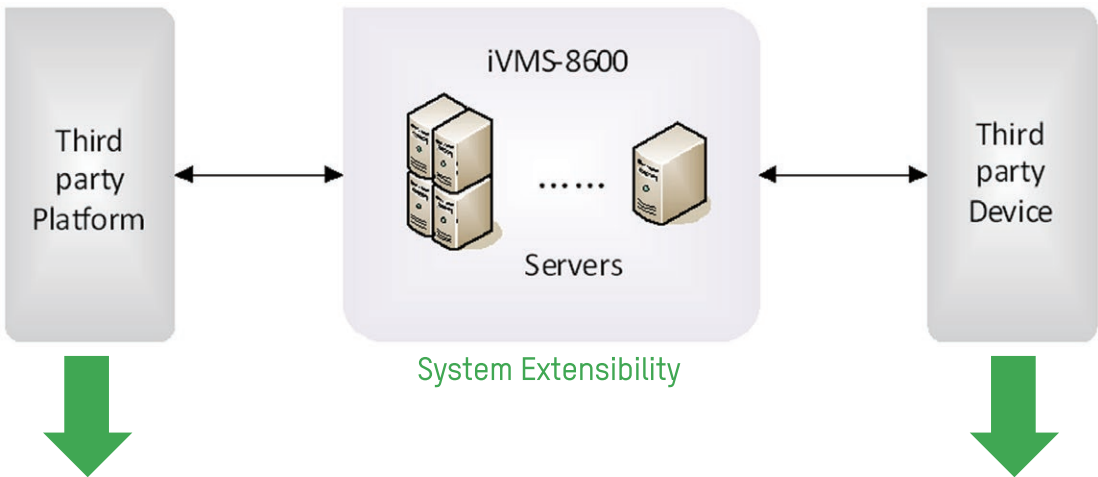
Smart Maintenance

The iVMS-8600 can monitor the status of devices including IP cameras, terminals, servers, DVRs, and NVRs, and will trigger an alarm if the device goes offline.



System Extensibility

Easily add third-party components and integrate them with Hikvision's iVMS-8600. This platform was designed for wide compatibility with today's complex applications.



- Web service
- FTP picture
- Private agreement
- Platform SDK (includes dynamic libraries and controls)
- Database (intermediate table and stored procedures)

- Web service
- FTP picture
- Private agreement
- Devices SDK

CONTROL CENTER

Every major installation needs a reliable and comprehensive center for management and oversight. Below, you will find Hikvision's innovative products compose command centers that are powerful, cost-effective, and ready to install. A command center that makes sense – by Hikvision.

Storage and Monitoring

With capabilities that go above and beyond, Hikvision's components bring your control center up to date. Get the tools you need to do the job you need – nothing less.

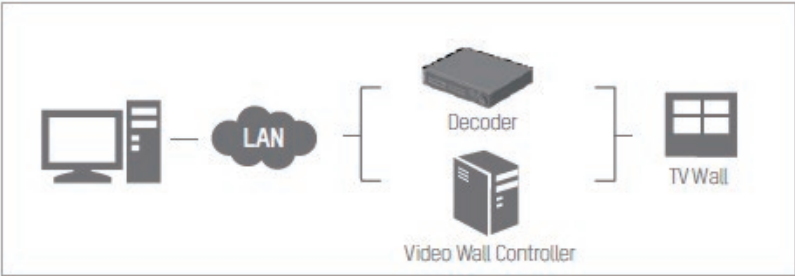


Storage Server

Modularized design and hot plugging for easy maintenance

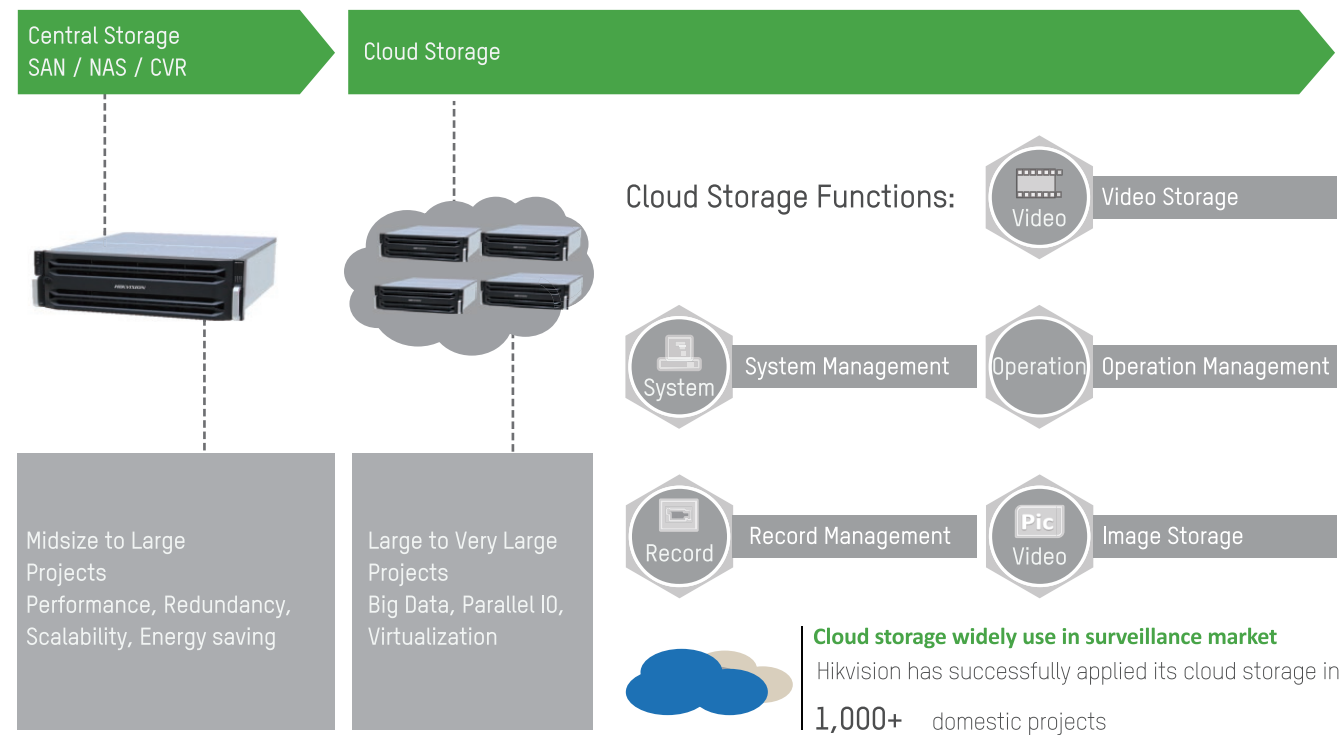
Double controller & power module for data safety

Supports CVR mode for better return on investment

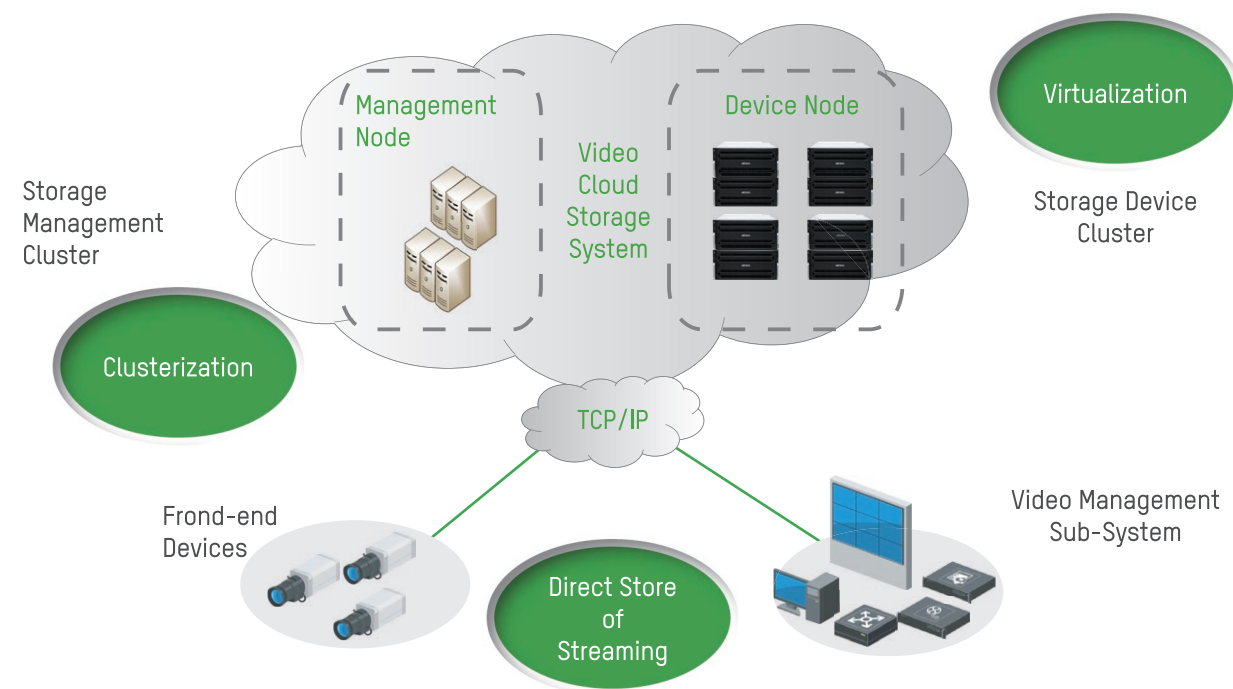




## Data Storage

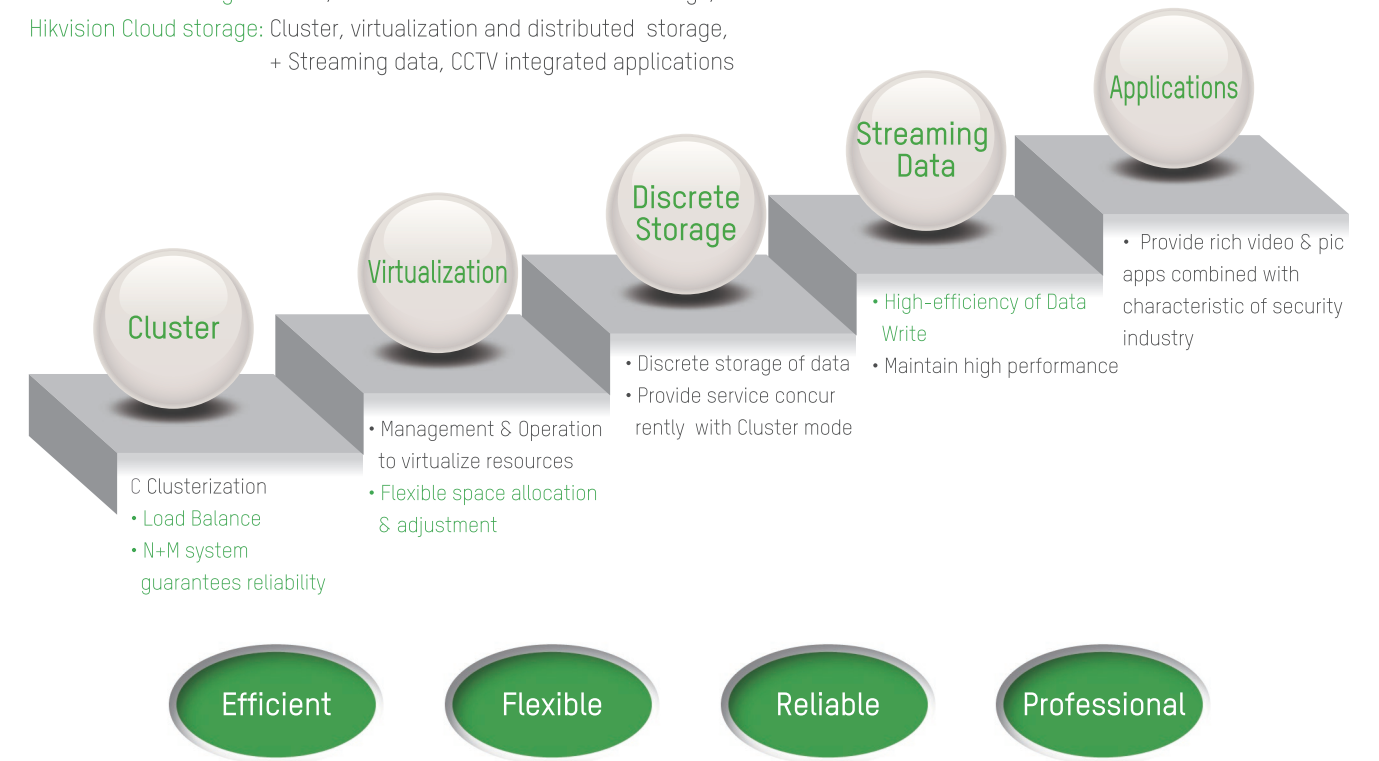


## Cloud Storage Structure



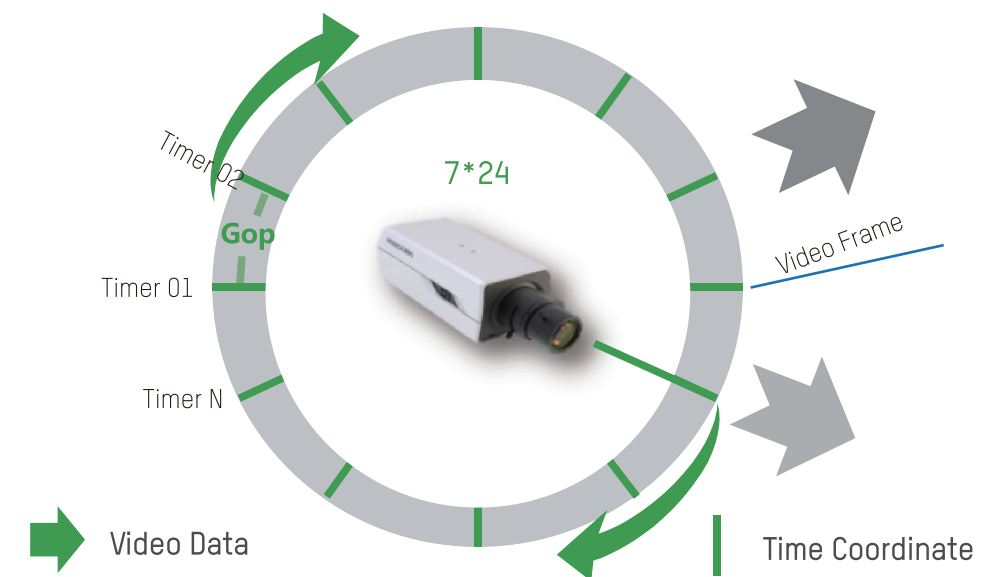
## Hikvision Cloud Storage Highlight

General cloud storage: Cluster, virtualization and distributed storage;  
Hikvision Cloud storage: Cluster, virtualization and distributed storage,  
+ Streaming data, CCTV integrated applications



## Streaming Storage for higher CCTV efficiency

Video data reads incessantly in the storage system based on the streaming character.



- Accurate playback by customer time
- Optimize storage model and improve storage efficiency

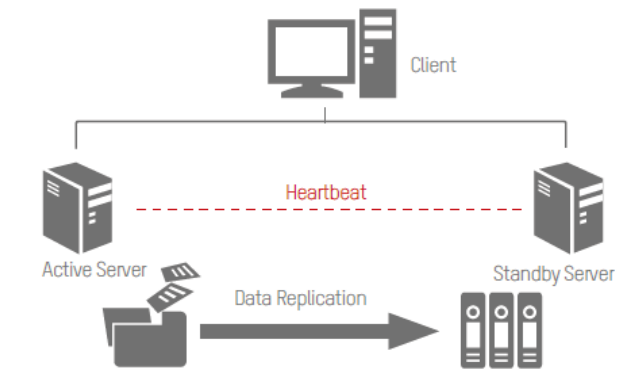
- No file fragments of streaming storage
- Data reading with quick response



## System Robustness

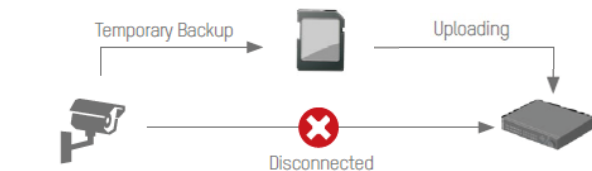
With active & standby servers, the "heartbeat" function automatically backs up critical data if the network ever goes down. Local SD cards mounted in the camera provide radical system reliability.

### Server Redundancy Design

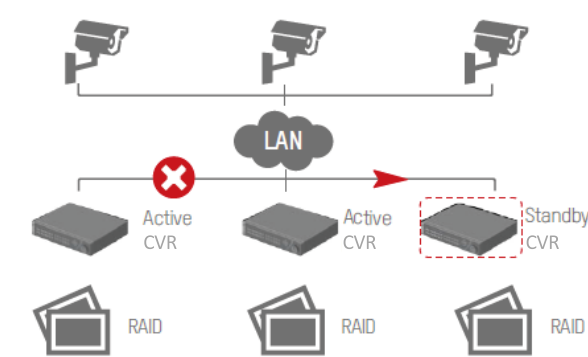


- Active & standby servers
- "Heartbeat" function automatically backs up users' information if one server is interrupted
- Ensures users' live view and playback in case of failover

### Auto Network Recovery (ANR)



### RAID & N+1 Failover



- **Single-Spot Storage Backup:** Multi-RAID supported by embedded NVR and Storage Server.
- **Multi-Spot Storage Backup:** When any active CVR is out of service, the standby CVR can take over recording automatically.

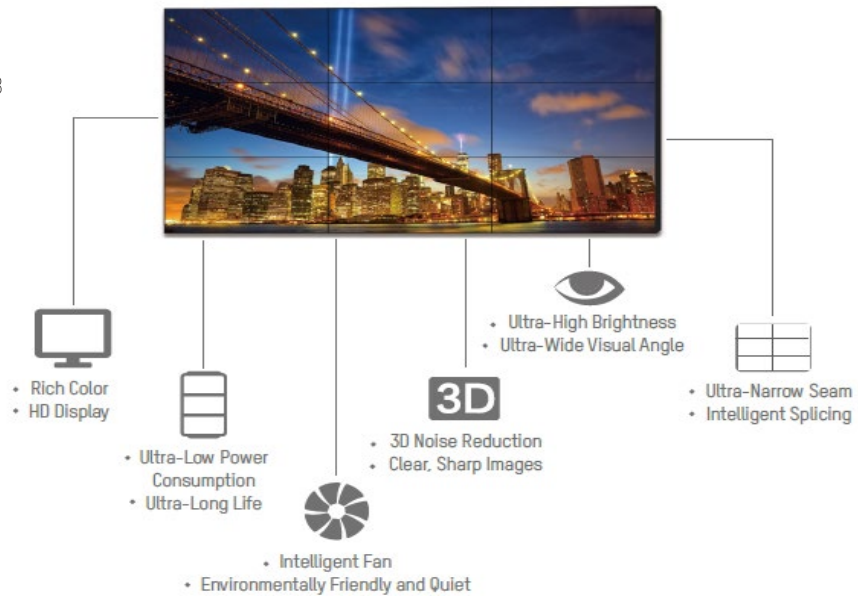
- Auto backup if network connection is interrupted
- Data moves from SD card to back-end device while network connection is restored
- We recommended using Hikvision brand Micro SD cards for ANR storage

## Video-Wall Display Unit LCD / DLP / LED

**LCD:**  
DS-2046NL-B, DS-2046NL-C,  
DS-2046NH-C, DS-2055NL-B, DS-2055NH-B

**DLP:**  
DS-D1050EH, DS-D1060EH, DS-D1067EH,  
DS-D1080EH, DS-D1070EF

**LED:**  
DS-D4012FI-EL, DS-D4018FI



## PRODUCT SHOWCASE

### Camera Units

#### Checkpoint



**VCU-7012-ITIR**  
3 MP Traffic Video Unit

- 3MP 1/1.8" Progressive Scan CCD
- Up to 2048 x 1536 @ 25fps for real-time output
- Satisfies the capture for one lane or two lanes and the forward or backward capture
- Support speed detection (with external speed measuring radar)
- Megapixels optical lens
- Support abundant ISP image processing techniques, such as 3D DNR, front light and backlight processing, smear suppression, etc.
- License plate recognition

#### Intersection



**ECU-7044-IT**  
3 MP Traffic Video Unit

- 3MP 1/1.8" Progressive Scan CCD
- Up to 2048 x 1536 @ 25fps for real-time output
- Satisfies the capture for one lane or two lanes and the backward capture
- Support illegal behaviors including Running Red Light, Illegal Lane Change, Driving on Lane Line, Reverse Driving and Driving Against Guidance
- Megapixels optical lens
- Two detection ways of traffic light: IO signal or traffic light signal detector
- Support abundant ISP image processing techniques, such as 3D DNR, front light and backlight processing, smear suppression, etc.
- License plate recognition

#### Traffic Flow Collection



**iDS-TC215**  
Traffic Flow Unit

- 2MP 1/1.8" Progressive Scan CMOS HD Camera
- Up to 1920 x 1080 @ 30 fps for real-time output
- ROI and SVC are adopted with high compression ratio, flexible disposal and low bitrate
- Network lightning protection and anti-surge
- 3D digital noise reduction
- Support detection of traffic flow, average vehicle speed, distance between cars of vertical and horizontal, time & space occupancy, lane queue length, vehicle type, lane running state

#### Checkpoint



**VCU-A014-ITIR**  
7 MP Traffic Video Unit

- 7MP 1" Progressive Scan CCD
- Up to 3392 x 2008 @ 25fps for real-time output
- Satisfies the capture for three lanes and the backward capture
- Support speed detection (with external speed measuring radar)
- Megapixels optical lens
- Support abundant ISP image processing techniques, such as 3D DNR, front light and backlight processing, smear suppression, LTM (Local Tone Mapping) etc.
- License plate recognition

#### Intersection



**ECU-A046-IT**  
7 MP Traffic Video Unit

- 7MP 1" Progressive Scan CCD
- Up to 3392 x 2008 @ 25fps for real-time output
- Satisfies the capture for three lanes and the backward capture
- Support illegal behaviors including Running Red Light, Illegal Lane Change, Driving on Lane Line, Reverse Driving and Driving Against Guidance
- Megapixels optical lens
- Two detection ways of traffic light: IO signal or traffic light signal detector
- Support abundant ISP image processing techniques, such as 3D DNR, front light and backlight processing, smear suppression, etc.
- License plate recognition

#### Traffic Flow Collection



**iDS-TC200-A/1140**  
DeepInView Traffic Flow Unit

- Hikvision Deep Learning Technology based
- 2MP 1/1.8" Progressive Scan CMOS HD Camera
- Up to 1920 x 1080 @ 30 fps for real-time output
- ROI and SVC are adopted with high compression ratio, flexible disposal and low bitrate
- Network lightning protection and anti-surge
- Support detection of traffic flow, average vehicle speed, distance between cars of vertical and horizontal, time & space occupancy, lane queue length, vehicle type, lane running state and congestion status



Illegal Parking



iDS-2VS225-F836  
Traffic PTZ Camera

- 2MP 1/1.9" progressive scan CMOS
- Up to 1920×1080 resolution
- 36× optical zoom; focal length 5.7 mm to 205 mm
- 16× digital zoom
- Min. illumination:
  - Color: 0.002Lux @(F1.5, AGC ON)
  - B/W: 0.0002Lux @(F1.5, AGC ON)
  - 0Lux with IR
- IR cut filter with auto switch
- 3D DNR, EIS, HLC, BLC, low bitrate, 120 dB WDR
- IP66
- GPS/BDS positioning module



DS-TL2002A(II)  
Supplemental LED Light

- 28 LED lamp beads
- White LED or Infrared LED
- Effective distance: 16~25m
- Angle of light: 10°
- Trigger Mode: TTL level (Switch trigger optional)
- Coverage: 1.5 road lane



SL-1211-2(850nm)  
Infrared Flash  
Supplemental Light

- Single lane
- Compensated Effective Distance: 18 – 25 m
- Flash Frequency: Up to 6 times/second
- Recycle Time: < 67 ms
- Trigger Mode: TTL level and switch trigger
- Wavelength: 850 nm



DS-TL2000A(II)-L1  
Supplemental LED Light

- 16 LED lamp beads
- White LED or Infrared LED
- Effective distance: 16~25m
- Angle of light: 10°
- Trigger Mode: TTL level (Switch trigger optional)
- Coverage: 1 road lane



DS-TL2002C(II)  
Supplemental LED Light

- 28 LED lamp beads
- White LED or 850nm LED (Infrared)
- Effective distance: 16~25m
- Angle of light: 40°
- Trigger Mode: TTL level (Switch trigger optional)
- Coverage: 1.5 road lane



SL-1211-2  
White Flash  
Supplemental Light

- Single lane
- Compensated Effective Distance: 16 – 25 m
- Flash Energy: 200J
- Flash Frequency: Up to 6 times/second
- Recycle Time: < 67 ms
- Trigger Mode: TTL level and switch trigger
- Optical Grating: Supported (Reducing light pollution effectively )
- IP65

Speed Inspection Radar



CSR-IN(P)  
High-precision Speed  
Inspection Radar

- High-precision narrow band radar
- Velocity range: 10~250 km/h
- Measurement accuracy: -4~0 km/h
- Support vehicle front & rear triggering
- Support direction information and vehicle length information.



CSR-IM  
Multi-lane Speed  
Inspection Radar

- Support multi-object detection, covering 1~3 road lanes
- Velocity range: 2~250 km/h
- Measurement accuracy: -4~0km/H
- Support vehicle front & rear triggering
- Support direction information

Other



TLD-2016-6  
Traffic Signal Light  
Detector

- 16-ch signal light AC signal interface
- 6 RS485 output
- 1 DC 5V output
- 5 pin switch to set band rate, address and upload method
- 16-ch lights to show status



DS-TP50-12DT  
Terminal Server

- Two BNC input interfaces, 2 BNC loop-out interfaces
- Four 3.5"/2.5" SATA HDD interfaces
- Eight 10/100M Ethernet interfaces
- Save recorded files on locked hard disk. The saved period is determined by stream bitrate and hard disk capacity.
- Text overlay and picture composition



iDS-TP40-16B  
DeepInMind Traffic  
Management Server

- Hikvision Deep Learning technology Based
- Support auto detecting 16-ch 3MP IP Camera Event Detection, Event Capture, Traffic Data Collection
- Event Detection Type: Traffic Jam, Parking, Over lane line, Turn Round, Reverse Driving, Pedestrian, Throw Object, Illegal Lane Change
- Traffic Data Collection Type: Traffic Flow, Speed, Spachead way, Time headway, Lane-time occupied rate, Lane-space occupied rate, Queuing Length, Traffic Traveling Status



DS-MI7504-GA  
Mobile Enforcement  
System

- Support 4-ch@720p TVI cameras;
- H.264 encoding technology;
- Pluggable network module;
- Built-in GPS module precisely positioning;
- Two 2.5-inch HDDs/SSDs for video storage;
- Wide-range power input (9 to 32 VDC);
- Power-off protection prevents key data from loss;
- Hard disk box with USB interface for recordings export;
- Specialized aviation plugs ensure signal stability;
- Manual controller for vehicle tracking.





**DS-MH6171I**  
Portable PTZ Dome

- 2 MP Full HD1080p high resolution
- 30X optical zoom, 12X digital zoom
- H.264+ optimized codec to reduce storage
- Dual SD card slots, up to 128 GB for each card
- Supports Wi-Fi, 3G, 4G wireless connection
- Interchangeable Lithium battery, up to 6-hour operating time
- Alarm I/O, RS232, RS485 interfaces
- Supports Bluetooth connection
- IP66 weather-proof protection
- Up to 195 feet (60m) IR range
- Powerful magnetic base for vehicle-roof mounting
- iVMS-4500 client for remote operation



**iDS-TDI300-A**  
Mobile Speed  
Detection System

- 3MP 1/1.8" progressive scanning CCD
- Maximum resolution up to 2048\*1536, Frame rate up to 25fps
- Support H.265 & H.264 encoding
- Support Full HD 2048\*1536@ 25fps live video output, Ultralow delay & code rate.
- Support intelligent recognition function, Built-in LPR engine.
- Support capture trigger via built-in radar.
- Speed measurement range: 20~250km/h
- Support continuous capture of violation behaviors.
- Flexible composition picture mode. Support composite multi-images of violation capture into one picture.
- 720P touch screen design.
- 500G SSD for capture image and video storage.
- USB3.0 for data export and upgrade.
- Built-in GPS/Wi-Fi/4G module.
- Built-in Lithium battery, easy deployment.



**DS-A81016S**  
CVR Network Storage

- Image and video mixed storage
- 3U (19-inch height)
- 16 HDD slots
- Recording Mode: Video (2 Mbps) + picture, 320-ch. recording + playback



**DS-A908RE-B**  
CVR Network Storage

- Image and video mixed storage
- 3U (19-inch height)
- 8 HDD slots
- Recording Mode: Video (2 Mbps) + picture, 78-ch. recording + playback



**DS-6901/04/08/  
10/12/16UDI**  
Ultra-High Definition  
Decoder

- Decoding Capacities:
  - 12 MP at 20 fps: 2 channels
  - 8 MP at 30 fps: 4 channels
  - 5 MP at 30 fps: 6 channels
  - 3 MP at 30 fps: 10 channels
  - 1080p at 30 fps: 16 channels
- Provides HDMI (adaptable to DVI-D) and BNC output interfaces
- Up to 4K (3840 x 2160 @ 30 Hz) via HDMI output interfaces (only for even interface)
- H.265+/H.265, H.264+/H.264, MPEG4 and MJPEG video compressions
- G.722, G711A, G726, G711U, MPEG2-L2, and AAC audio compressions



**DS-C10S-S11/22/41/E**  
Video Wall Controller

- Maximum 184-ch. analog, or 92-ch TVI or 92-ch HDMI / DVI / VGA input
- Maximum 72-ch. HDMI / DVI / VGA output
- Up to 72-piece screen jointing
- Built-in Matrix
- Supports joint, division and display
- Base map
- Cross-window video roaming
- Supports HDD hot swapping
- Redundant power supply



**DS-MH2111**  
Body Camera

- Wi-Fi/3G /4G/GPS/Integrate into iVMS
- H.264
- 1080P@60fps, 720P@120fps
- 16MP image capture
- 4400mAh fixed battery
- 2-inch LCD screen/Intercom/Emergency linkage button/ IR
- IP66



**DS-MH2211**  
Body Camera

- Wi-Fi/GPS
- H.265(Customized)/H.264
- 1080P@30fps, 720P@30fps
- 5MP image capture
- 1650mAh removable battery
- Replace battery without shutdown
- 2-inch LCD screen/G-sensor/IR
- IP65

■ Control Center



**DS-MH4172I**  
Body Camera Dock  
Station

- OS: Window10 system
- External LCD screen for operation
- Docking port: 8 body cameras
- Storage: 2T/4T/8T(Optional)
- Indicator: power, data
- Interface: Wi-Fi /RJ45/USB/HDMI/VGA/Rs232/Audio



**DS-A72024R**  
CVR Network Storage

- Image and video mixed storage
- 4U (19-inch height)
- 24 HDD slots
- Recording Mode: Video (2 Mbps) + picture, 820-ch. recording + playback